

AWP76141Z



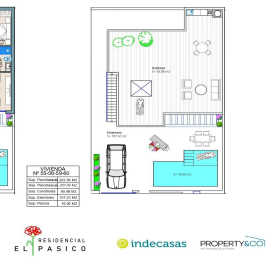
SUPERFICIES

V	CONSTRUIDA	EXTERIORES Y SOLARIUM	PARCELA
V-1	90.48 M2	98.28 + 83.88 = 182.16 M2	198.00 M2
V-2	73.62 M2	83.85 + 67.75 = 151.60 M2	162.00 M2
V-3	73.62 M2	83.85 + 67.75 = 151.60 M2	162.00 M2
V-4	73.62 M2	83.85 + 67.75 = 151.60 M2	162.00 M2
V-5	73.62 M2	83.85 + 67.75 = 151.60 M2	162.00 M2
V-6	73.62 M2	83.85 + 67.75 = 151.60 M2	162.00 M2
V-7	73.62 M2	83.85 + 67.75 = 151.60 M2	162.00 M2
V-8	73.62 M2	83.85 + 67.75 = 151.60 M2	162.00 M2
V-9	73.62 M2	83.85 + 67.75 = 151.60 M2	162.00 M2
V-10	90.48 M2	98.28 + 83.88 = 182.16 M2	198.00 M2



Villa in torre-pacheco

€324,900



3



2



90m²



203m²



RESIDENCIAL EL PASICO FASE 2 Y FASE 3 - New build villa with 3 bedrooms in Torre-Pacheco, Costa Blanca, Spain.