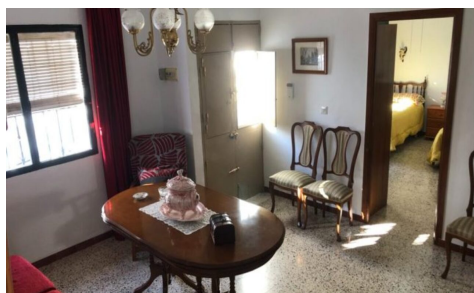


ES172657



Town House in Alora

€159,000



3



1



162m²



226m²



N/A

This freshly presented, traditional village house is located in a residential street just 500m from Álora train station. It sits on an exceptionally large (226m²) urban plot extending between 2 parallel streets and the total build size is 162m². The main living accommodation is accessed from the front street and is distributed over an interesting split level extending to approx 80m² offeri...(Ask for More Details!)